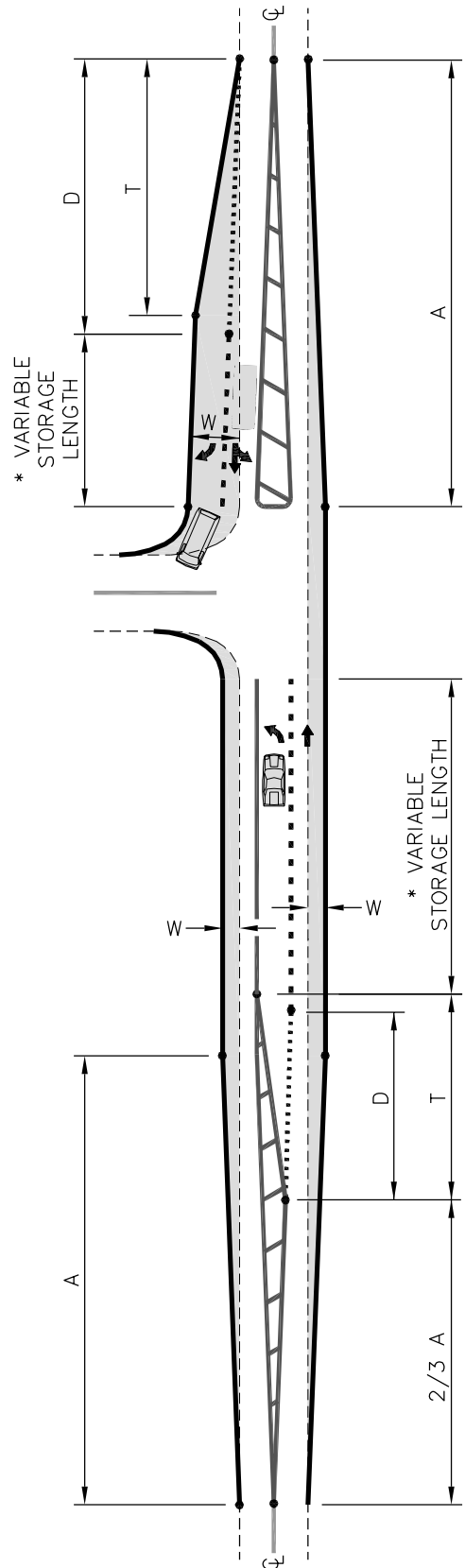


RECOMMENDED TREATMENT FOR TURN LANES - GEOMETRIC PROPERTIES						
A	S	POSTED SPEED (mph)	D	D	D	T
APPROACH - DEPARTURE TABLE	DESIGN SPEED (mph)	(mph)	MINIMUM DECELERATION LENGTH	DESIRABLE DECELERATION LENGTH	BAY TAPER LENGTH	BAY TAPER LENGTH
A = $WS^2 / 60$ (IF $S \leq 40$ MPH) A = $W \times S$ (IF $S > 40$ MPH) S = DESIGN SPEED W = WIDTH OF LATERAL SHIFT	30	≤ 25	100'	150'	75'	75'
	35	30	100'	150'	75'	75'
	40	35	150'	200'	100'	100'
	45	40	150'	250'	100'	100'
	50	45	150'	300'	100'	100'
	55	50	200'	500'	150'	150'
60	55	200'	575'	200'	200'	

* = STORAGE LENGTH FOR WAITING VEHICLES PER DOT.



SYMMETRICAL WIDENING



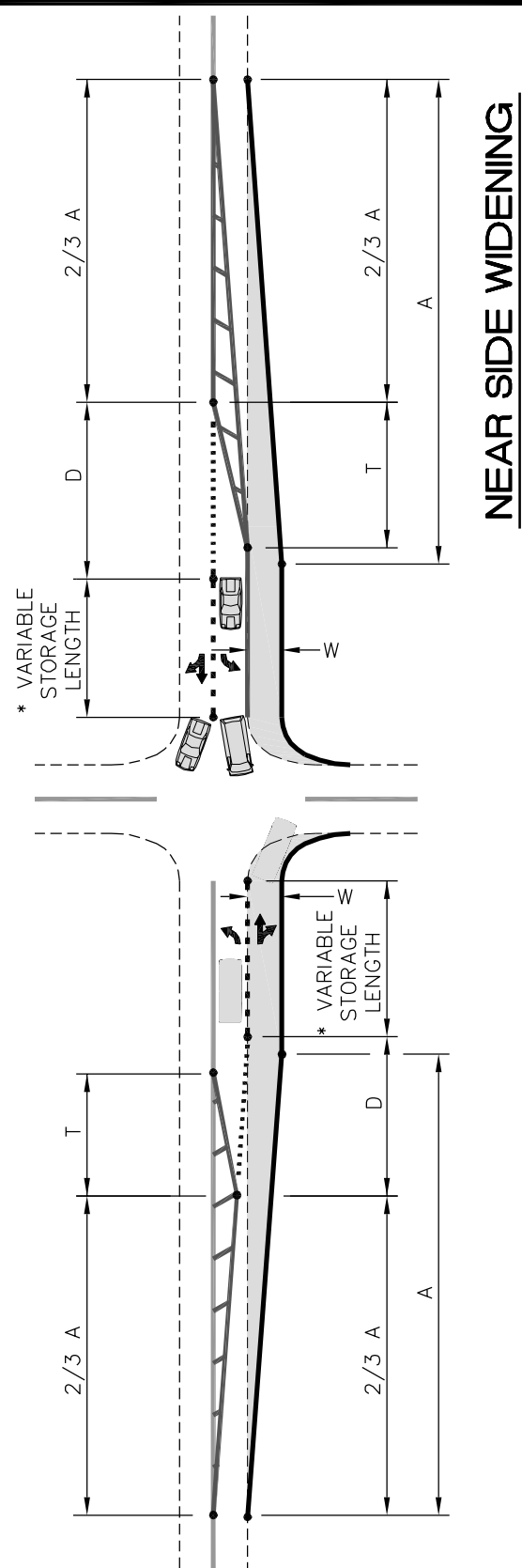
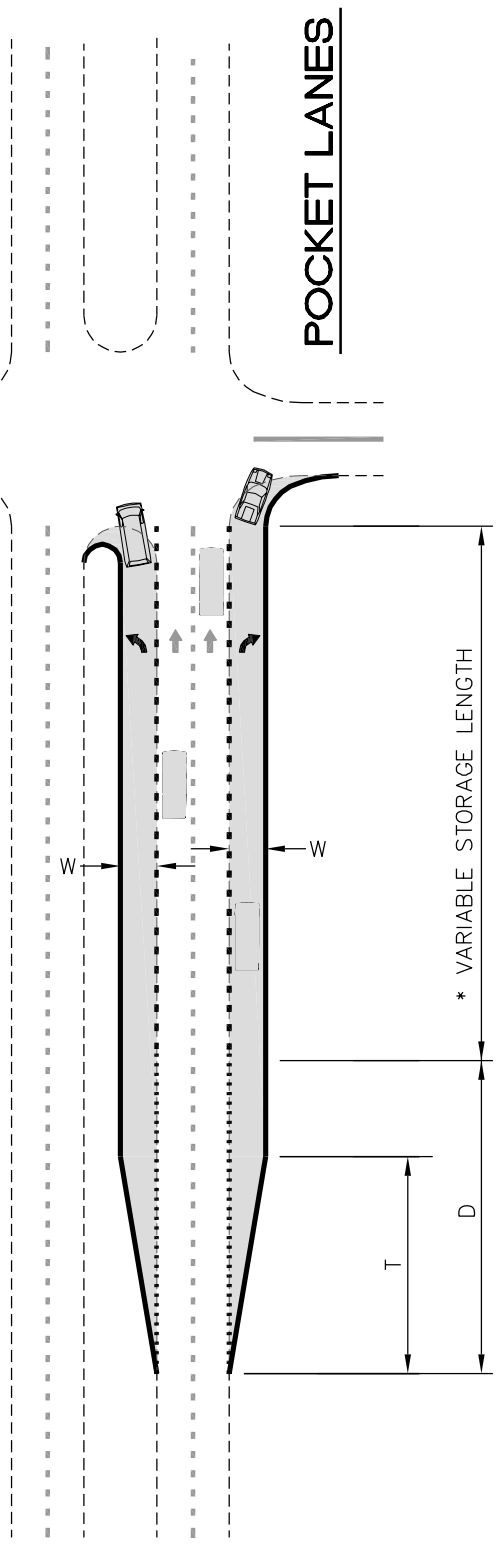
TOWN of CLAYTON
 USE WITH THE TOWN of CLAYTON STANDARD SPECIFICATIONS ONLY

RECOMMENDED TREATMENT FOR TURN LANES

SCALE: Not To Scale	DETAIL # 2403.04
REVISION DATE: July, 2010	SHEET #: 1 of 2

NOTE:

See sheet 1 of 1 for RECOMMENDED TREATMENT FOR TURN LANES - GEOMETRIC PROPERTIES chart and notes.



TOWN of CLAYTON

USE WITH THE TOWN of CLAYTON STANDARD SPECIFICATIONS ONLY

RECOMMENDED TREATMENT FOR TURN LANES

SCALE: Not To Scale	DETAIL # 2 403.04
REVISION DATE: July, 2010	SHEET #: 2 of 2