

**SCHEMATIC SECTION OF TYPICAL GEOGRID REINFORCED SEGMENTAL WALL RETAINING**

STANDARD 1/2" SETBACK

**NOTES:**

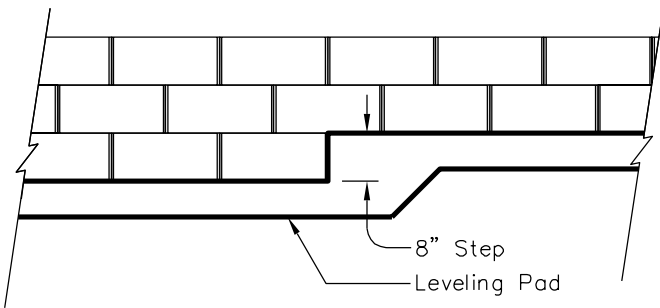
1. Performed PVC drainage tile in stone wrapped in fabric may be required. Design engineer to make determination if needed and location.



**TOWN of CLAYTON**  
USE WITH THE TOWN of CLAYTON STANDARD SPECIFICATIONS ONLY

**SEGMENTAL RETAINING WALLS  
IN RIGHT-OF-WAY**

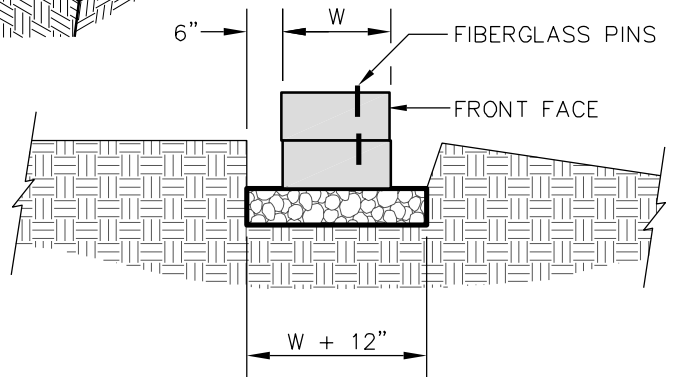
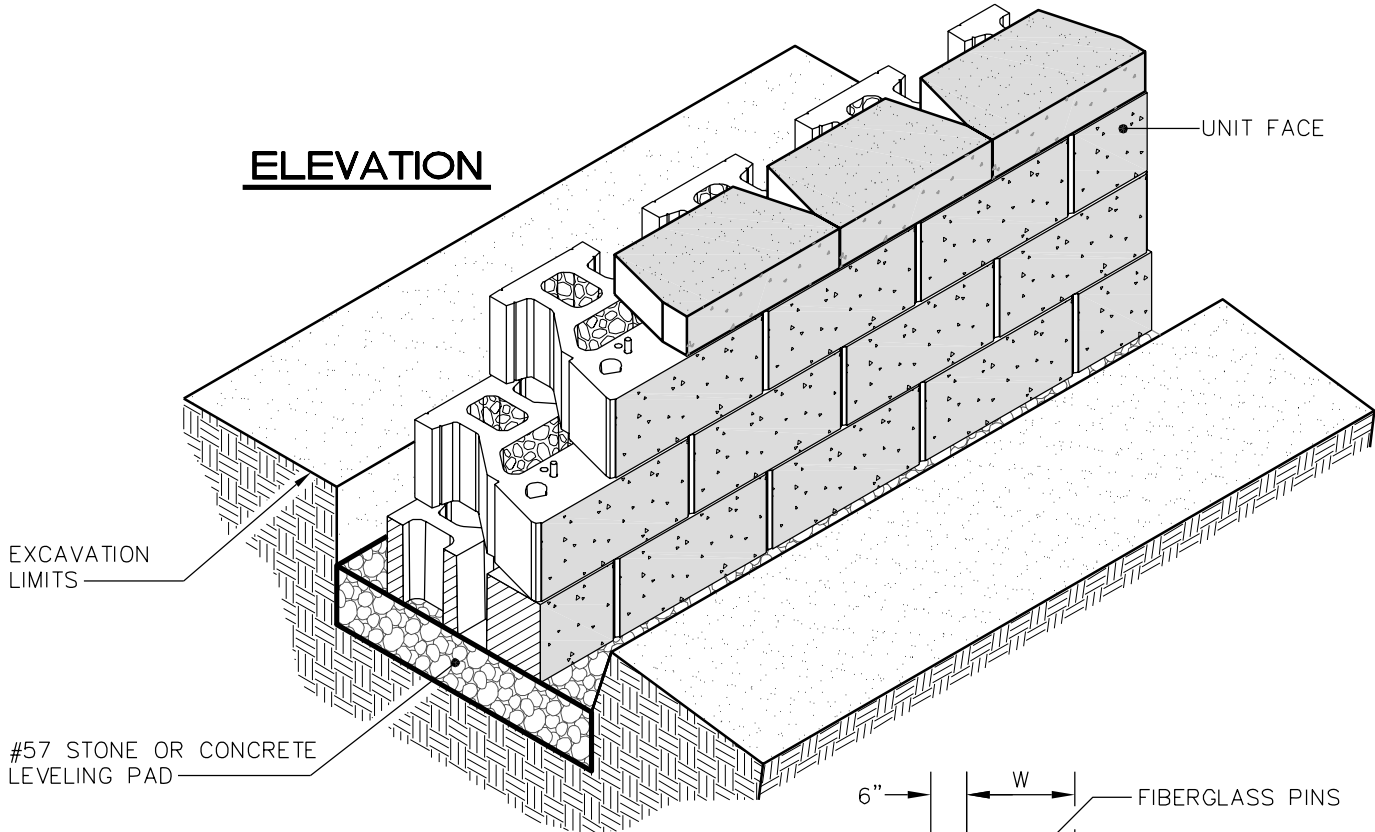
SCALE: Not To Scale	DETAIL # 2406.02
REVISION DATE: July, 2010	SHEET #: 1 of 3



### BASE PAD

SHAPE, DIMENSIONS & WEIGHT  
VARY BY MANUFACTURER  
(KEYSTONE SHOWN)

### ELEVATION



### SECTION

#### BASE LEVELING PAD NOTES:

1. The leveling pad is to be constructed of #57 stone or concrete.
2. The leveling pad foundation is to be approved by the engineer prior to placement of the leveling pad.

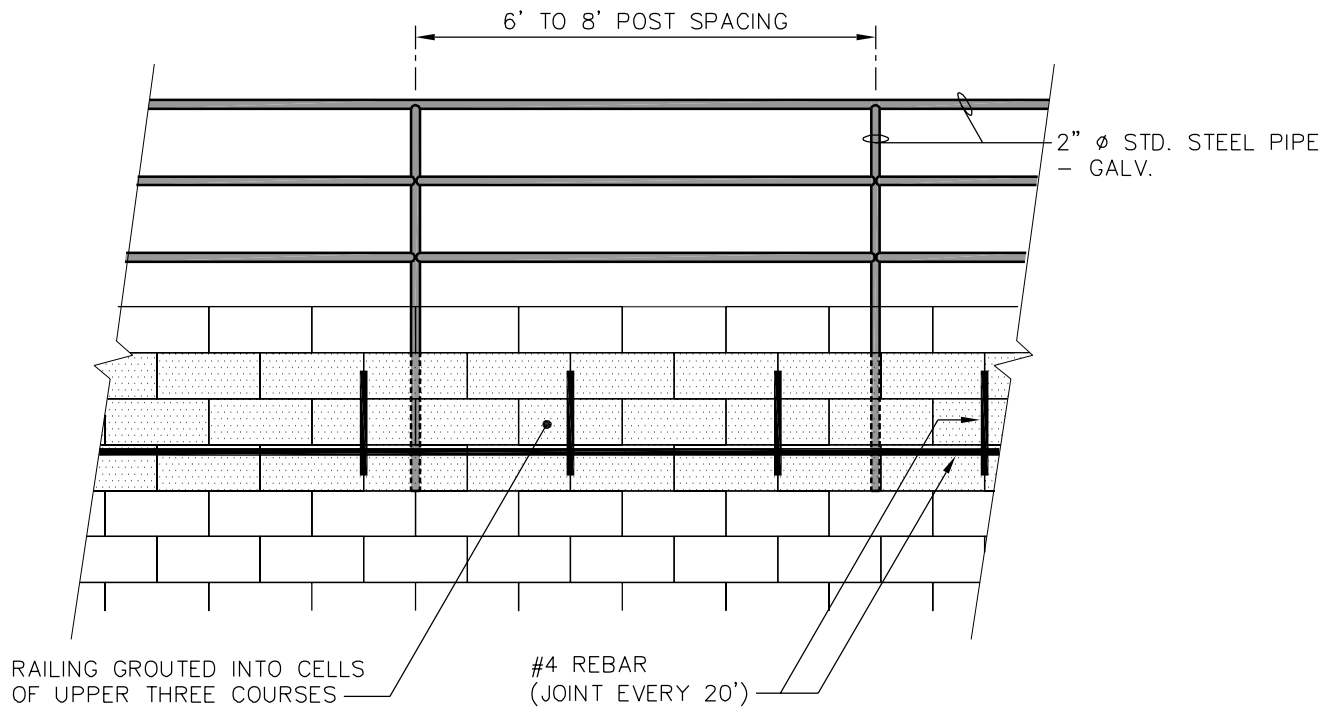


## TOWN of CLAYTON

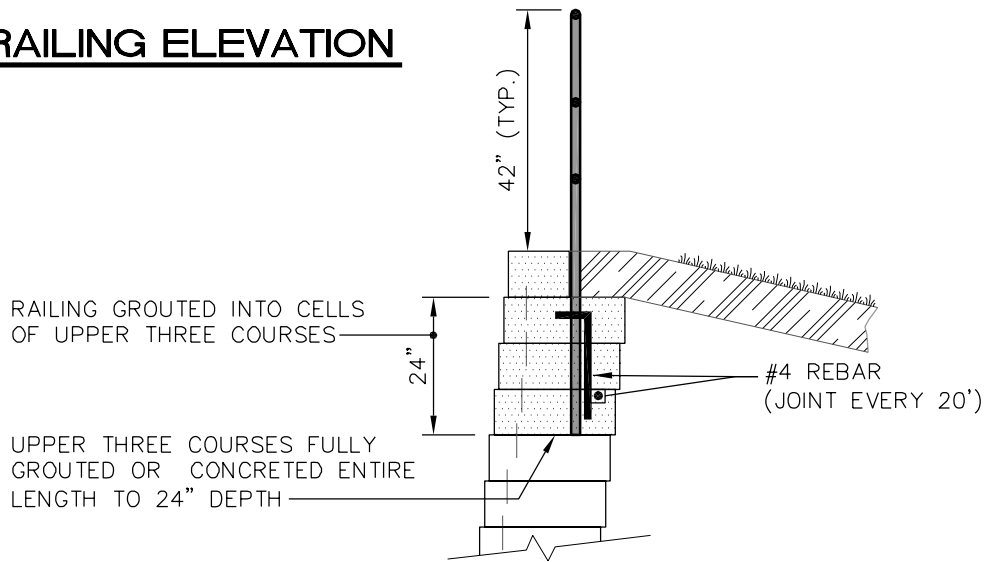
USE WITH THE TOWN of CLAYTON STANDARD SPECIFICATIONS ONLY

# SEGMENTAL RETAINING WALLS IN RIGHT-OF-WAY

SCALE: Not To Scale	DETAIL # 2406.02
REVISION DATE: July, 2010	SHEET #: 2 of 3



**TYPICAL RAILING ELEVATION**



**STANDARD UNIT SECTION**

**TYPICAL DIRECT MOUNT RAILING DESIGN**

DIRECT MOUNT - 50 PLF LATERAL LIVE LOAD AT TOP OF RAIL



**TOWN of CLAYTON**

USE WITH THE TOWN of CLAYTON STANDARD SPECIFICATIONS ONLY

**SEGMENTAL RETAINING WALLS  
IN RIGHT-OF-WAY**

SCALE: Not To Scale	DETAIL # 2406.02
REVISION DATE: July, 2010	SHEET #: 3 of 3