

WAKE COUNTY
JOHNSTON COUNTY

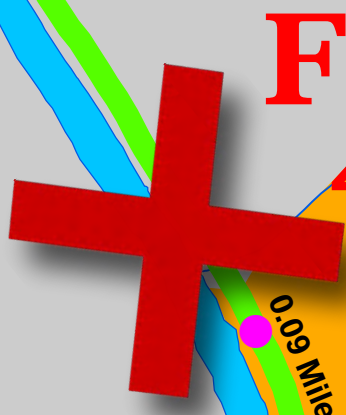
Attention Long Distance Runners & Bicyclists:
Greenway Routes Limited!!!!

TRAIL CLOSED AHEAD!

Two miles each way
CLOSED perhaps through summer
due to utility work

From the Sam's Branch trailhead/parking lot, you can go about a mile and reach the Butterfly Garden & Outdoor Public Art exhibit.

From the Clayton River Walk trailhead/parking lot, you can access about a mile to the south, including the scenic pedestrian bridge over the Neuse, or you can go just over a mile north toward the Riverwood community. If you'd like to enjoy a longer bike ride or walk to Wake County/Raleigh, you'll need to park at the Neuse River Trail at 6090 Mial Plantation Rd just over the county line.



SEE DETOUR
MAP BELOW!

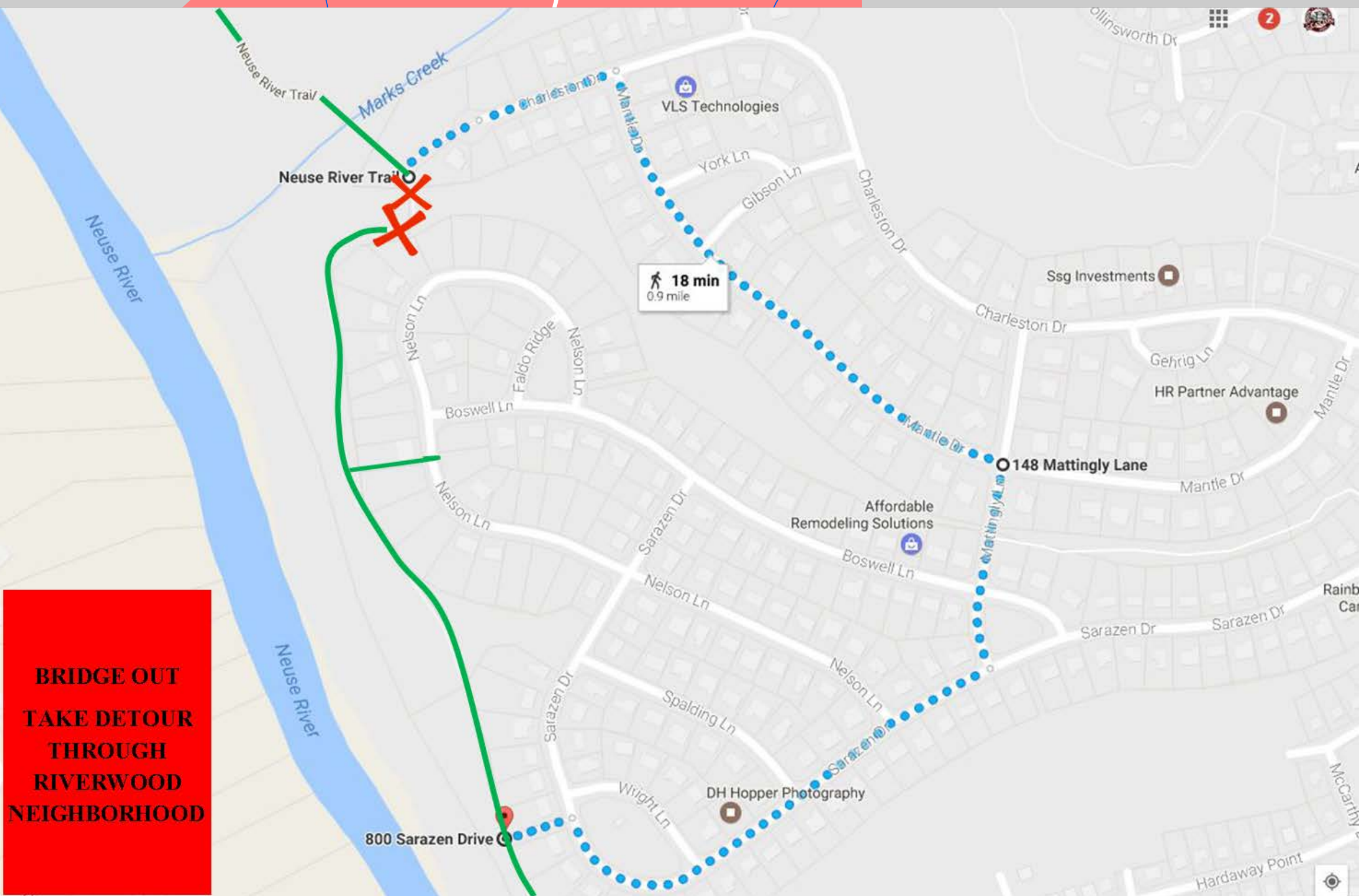
SEE DETOUR
MAP BELOW!

Riverwood Athletic Club
Subdivision

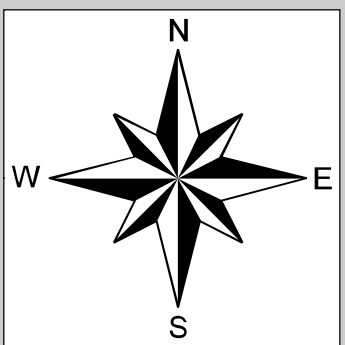
Clayton River Walk
on the Neuse Trailhead
and Parking

Sam's Branch
Greenway
Trailhead &
Parking

Butterfly Garden
& Student Outdoor Art
(This is about 1 mile from Sams Branch
Greenway Trailhead/Parking Lot)



BRIDGE OUT
TAKE DETOUR
THROUGH
RIVERWOOD
NEIGHBORHOOD



Legend

- Trails
- Riverwood Trail Access
- Parking
- You Are Here
- Bridge

0.25 0.125 0 0.25 Miles